



COST

European Network on New Sensing Technologies for Air Pollution Control
and Environmental Sustainability - *EuNetAir*

COST Action TD1105

WGs and MC Meeting at Cambridge, 18-20 December 2013

Action Start date: 01/07/2012 - Action End date: 30/06/2016

Year 2: 1 July 2013 - 30 June 2014 (*Ongoing Action*)



Philipp Schneider

WG3 Member

NILU, Norway

 **cost**
EUROPEAN COOPERATION IN SCIENCE AND TECHNOLOGY

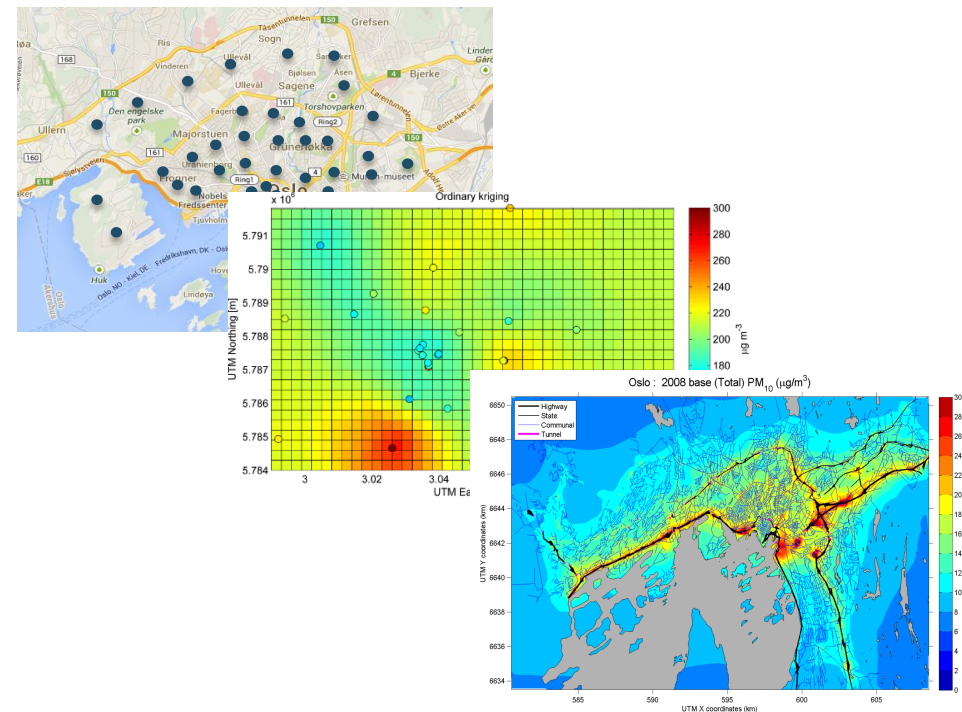


Spatial Mapping and Data Assimilation of Observations from Low-Cost Air Quality Sensors within CITI-SENSE

Philipp Schneider¹
William Lahoz¹
Núria Castell¹

¹NILU – Norwegian Institute for Air Research,
Kjeller, Norway

Contact: ps@nilu.no



The CITI-SENSE project

- Development of sensor-based Citizen's Observatories for improving the quality of life in cities
- Collaborative Project funded by FP7-ENV-2012
- 28 project partners from 12 countries (Europe, South Korea, and Australia)
- Total budget of EUR 12M
- Case studies at 9 locations throughout Europe



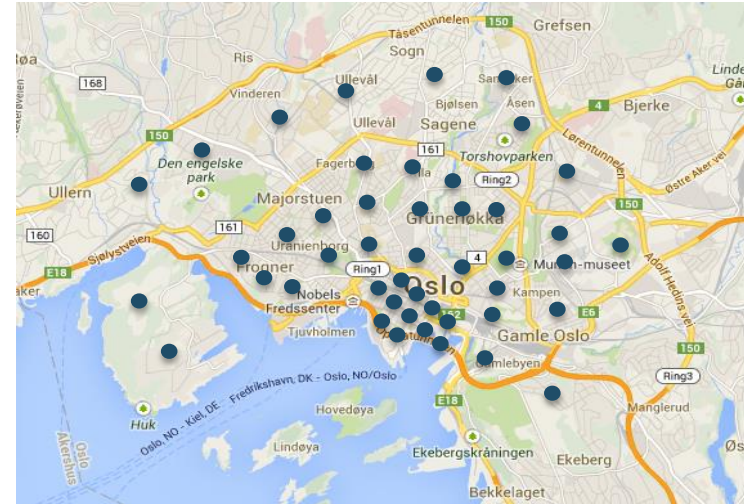
CITI-SENSE: Oslo case study



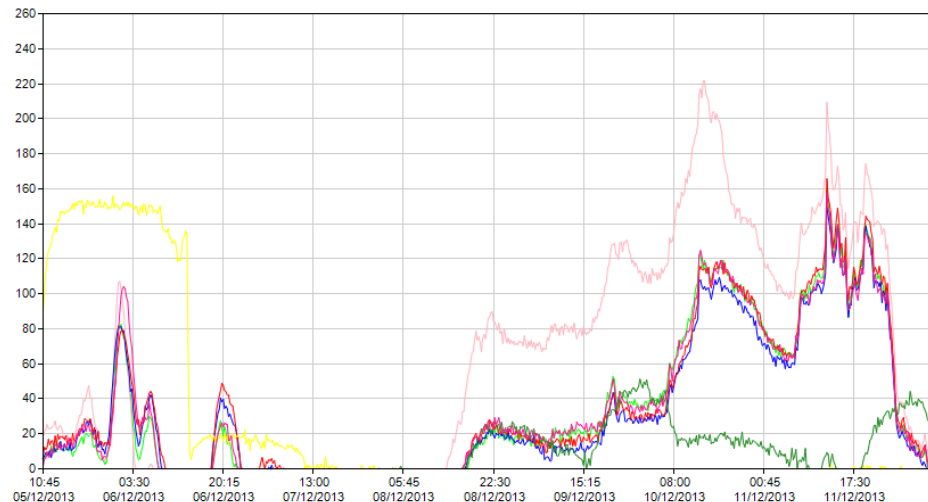
~40 Geotech sensors will be installed throughout Oslo

Parameters to be measured include NO, NO₂, SO₂, O₃, CO, as well as meteorological parameters such as air temperature, relative humidity, and atmospheric pressure

Temporal sampling: 15 minute intervals



High density network of static sensor nodes to be deployed throughout Oslo in 2014/2015



First few sensors units are currently in the evaluation phase at NILU (laboratory and real-world testing)

Spatial mapping of CITI-SENSE data

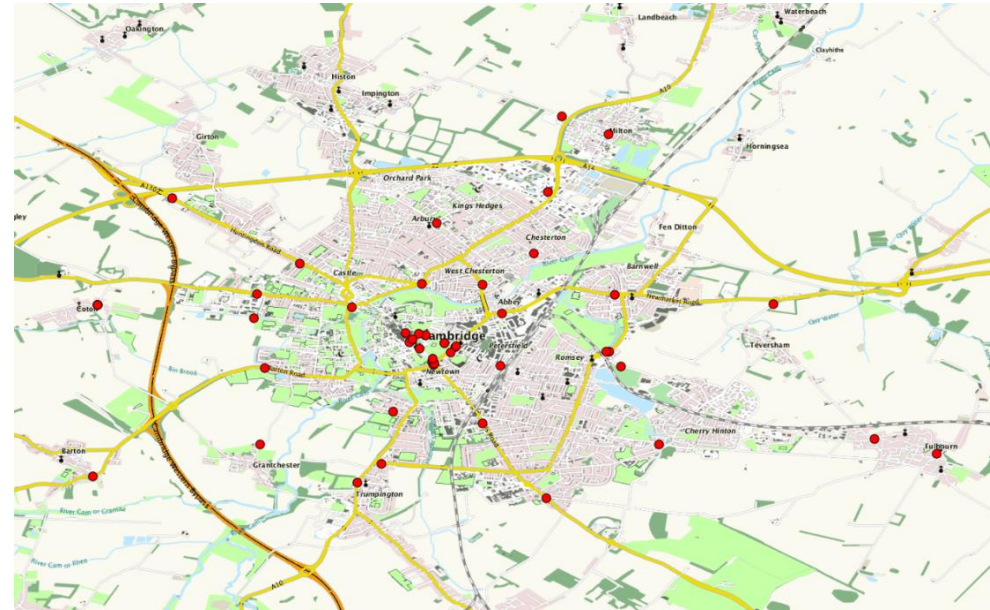
- One of the main goals of CITI-SENSE is to provide the users with a continuous map of crowdsourced air pollution data in their city
- Therefore spatial interpolation is required
- Many techniques of varying complexity exist
 - Basic interpolation techniques
 - Linear interpolation
 - Inverse distance weighting
 - Natural neighbor interpolation
 - Geostatistics
 - Ordinary kriging
 - Kriging with external drift (using spatially continuous auxiliary variables)
 - Data Assimilation
 - Variational: 3D-Var, 4D-Var
 - Sequential: Ensemble Kalman Filter (EnKF)



CITI-SENSE users will have access to crowdsensed air quality data on their mobile phones. Many applications, such as finding the least-polluted route in a city, require spatially continuous maps.

Basic Interpolation Techniques

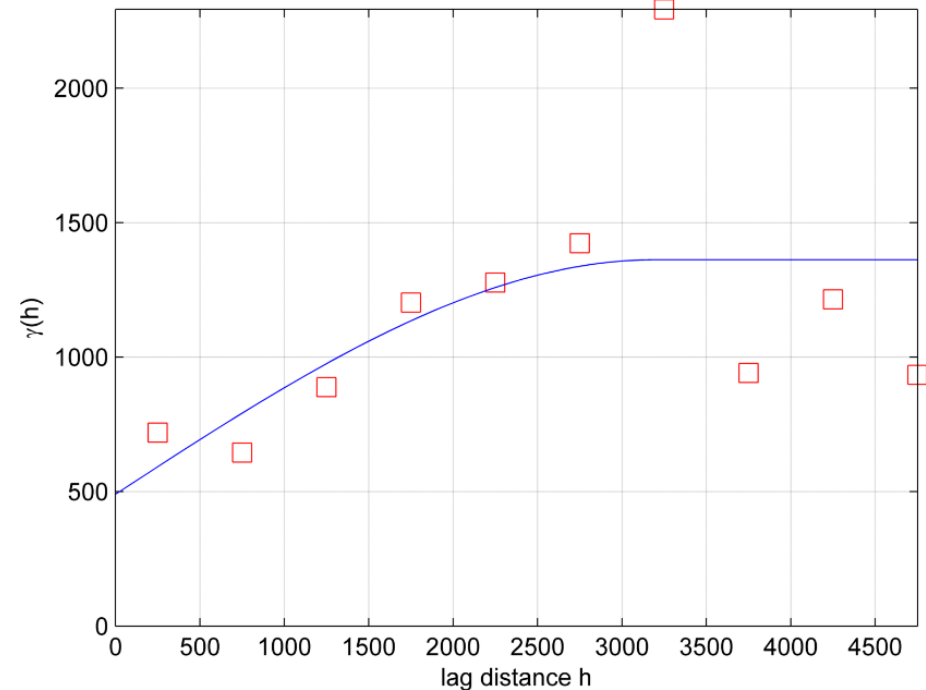
- Many varieties
 - Linear interpolation
 - Natural neighbor interpolation
 - Cubic spline interpolation
 - Inverse distance weighting
- Advantages
 - Fast
 - Easy to implement and automate
- Disadvantages
 - Do not take into account spatial autocorrelation
 - Often not optimal results (e.g. discontinuities)
 - Do not provide an uncertainty estimate



Locations of static sensor nodes described in Mead et al. (2013)

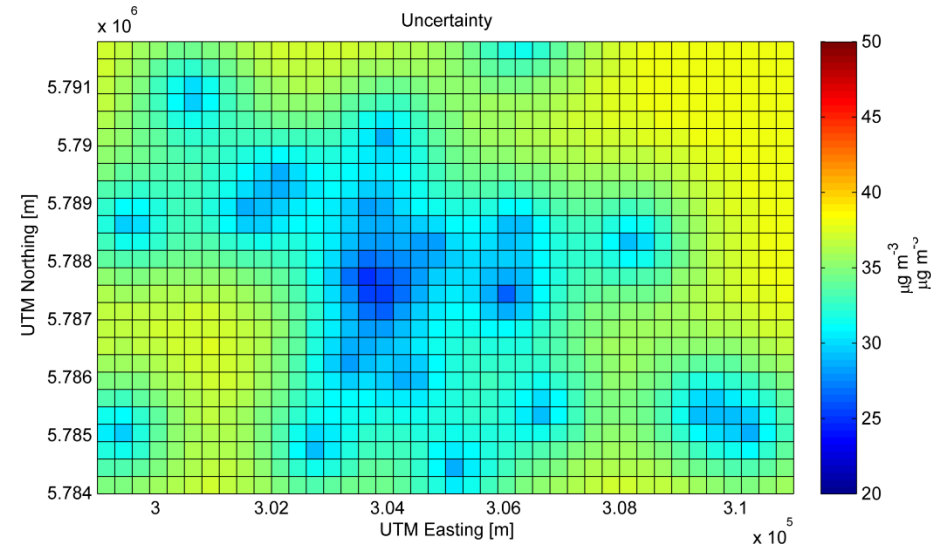
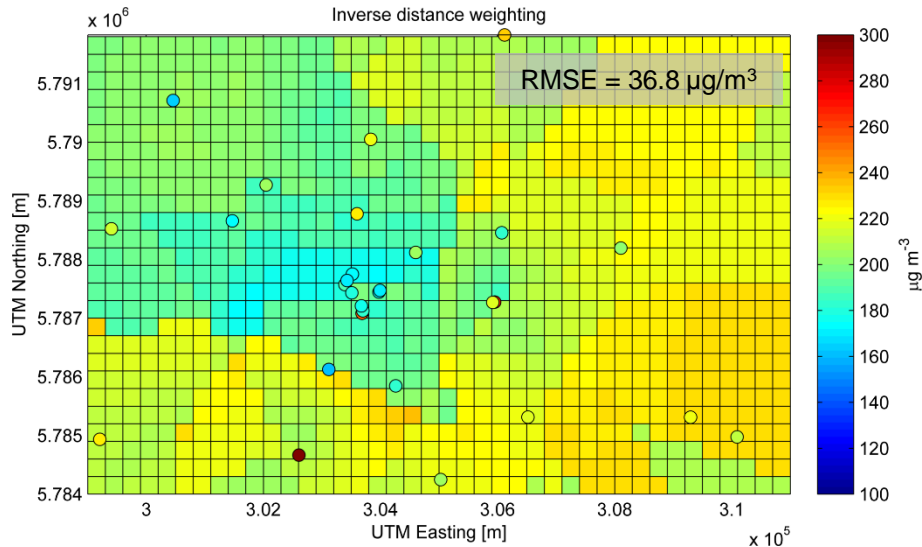
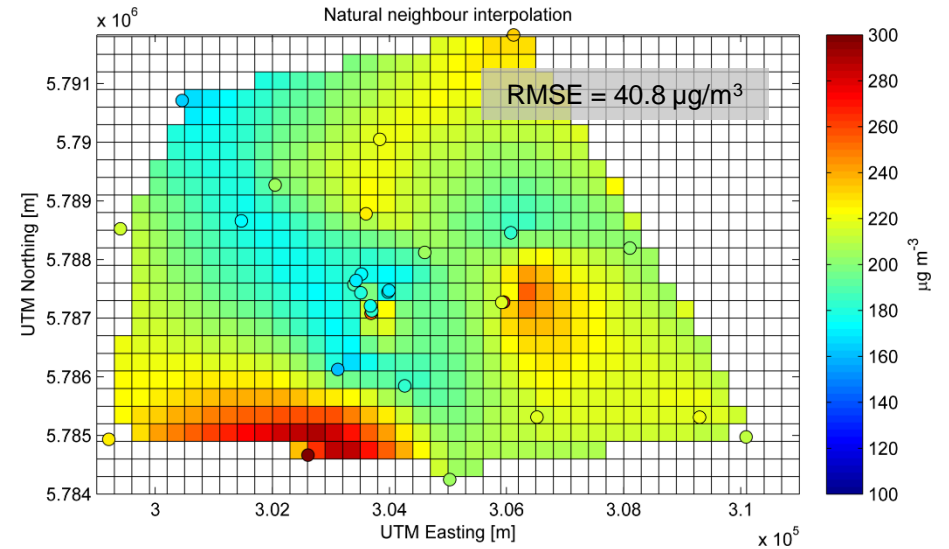
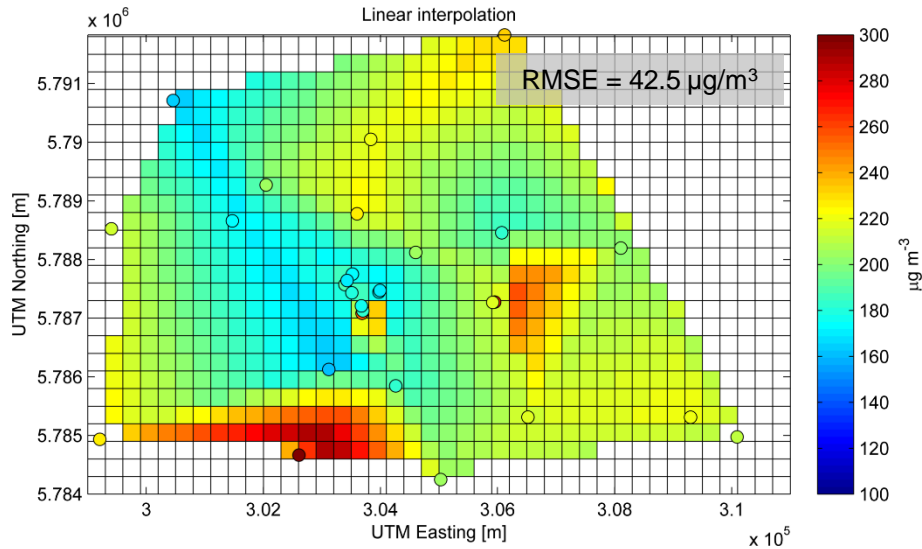
Geostatistics and Data Fusion

- Uses a model of the spatial autocorrelation of the observations
- Can easily integrate spatially exhaustive auxiliary data to “guide” the interpolation (-> data fusion)
- Advantages
 - Explicitly takes spatial autocorrelation into account
 - Provides Best Linear Unbiased Estimate (BLUE)
 - Provides uncertainty estimates
 - Allows for the use of auxiliary data
- Disadvantages
 - Computationally more expensive
 - Full automatization of semivariogram model challenging



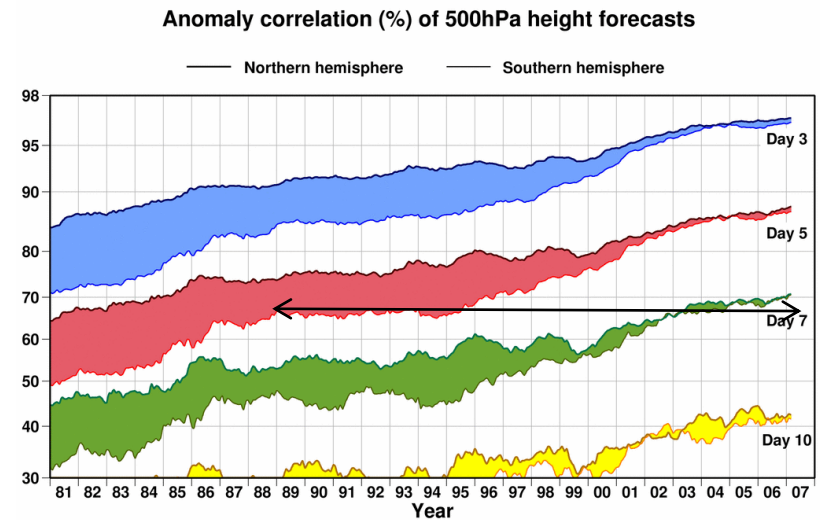
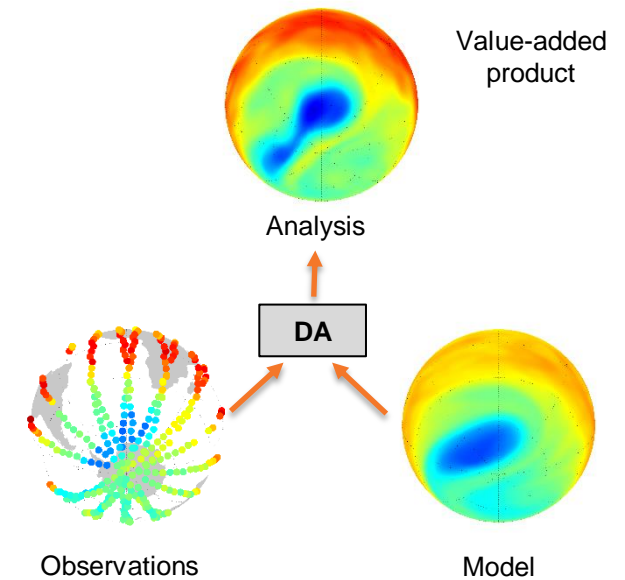
Empirical and theoretical semivariogram to describe spatial autocorrelation

Example: Mapping Cambridge CO data (Mead et al. 2013)



Data Assimilation

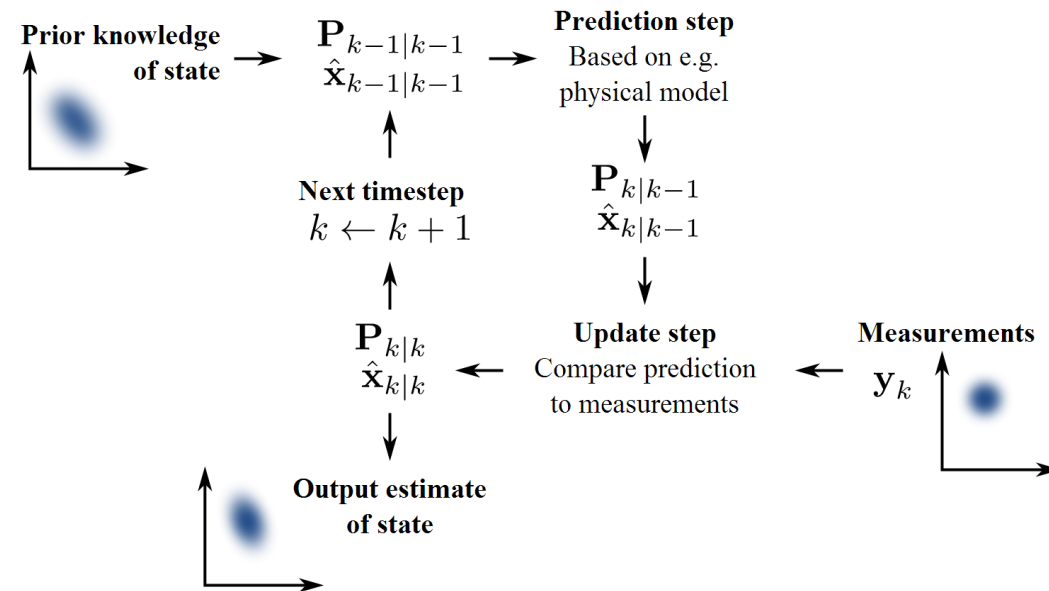
- Combining observational and model information
- Based on mathematical principles (optimality; Bayes's rule)
- Added value:
 - Analysis better than either observations or model alone
 - Observations: filling in gaps
 - Model: constrain using observations (and learn about model deficiencies)
- Enormous success in NWP (ECMWF) and used for various elements of the Earth System
- Provides a way to account for the uncertainty of the observations (critical for “crowdsourced” microsensor data of AQ!)
- Data assimilation at the urban scale will be used experimentally within CITI-SENSE



Forecast improvement at EMCWF, based to a large extent on DA of satellite data

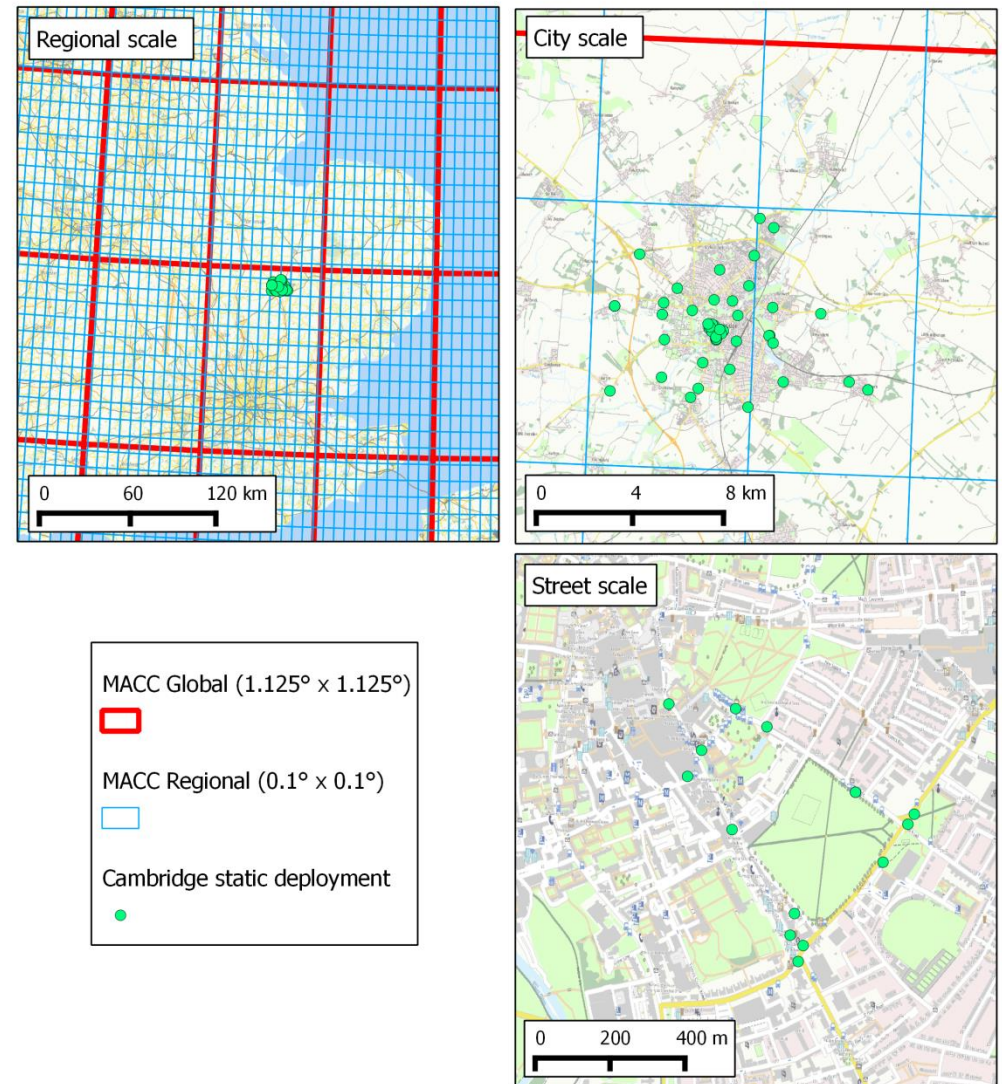
The Ensemble Kalman Filter (EnKF)

- For DA in CITI-SENSE the Ensemble Kalman Filter will be used
- The original Kalman Filter relies on a manual update of the covariance matrix
- This is not feasible for complex systems such as NWP
- The EnKF solves this
 - Monte Carlo implementation of the Bayesian update problem
 - Covariance matrix is estimated from an ensemble of model states
 - Allows to account for uncertainty in observations and model



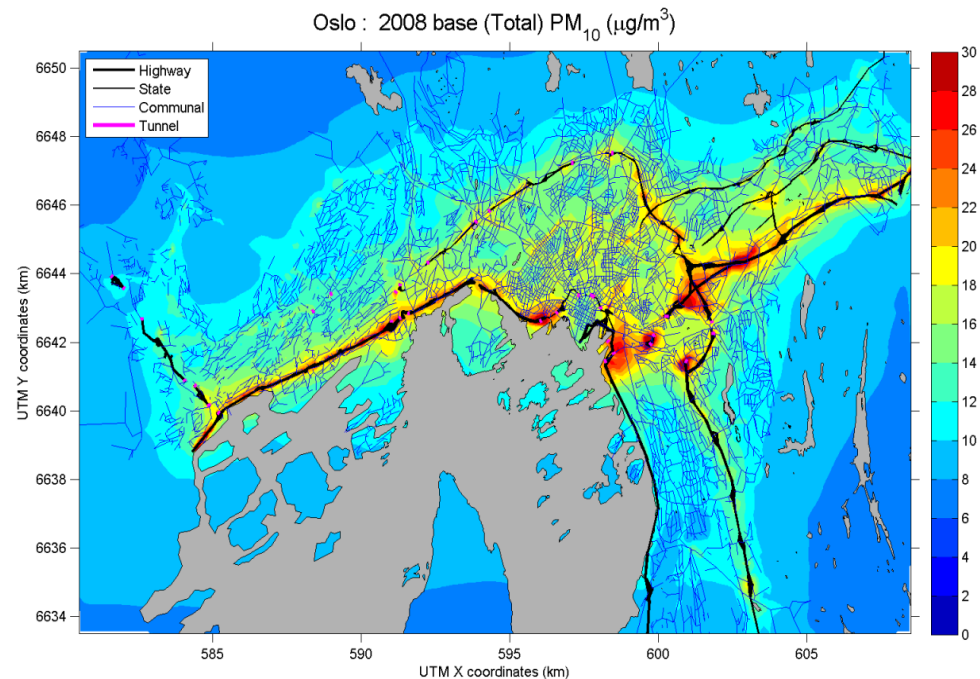
The issue of scale...

- Data Assimilation for atmospheric applications (and chemical weather) currently happens at very coarse spatial resolutions
- Data Assimilation of AQ observations at the urban scale has not been done before
- Underlying physics, chemistry, and statistics are very different at high spatial resolution
- Requires a much higher-resolving AQ model than operational CTMs



The EPISODE model

- Three-dimensional, combined Eulerian/Lagrangian air pollution dispersion model, developed at NILU
- Main focus on urban and local-to-regional scale applications
- Provides gridded fields of ground-level hourly average concentrations
- Spatial resolution down to 100m
- Time step between 10 s and 300 s
- Schemes for advection, turbulence, deposition, and chemistry





Summary

- CITI-SENSE is an ongoing FP7 project dedicated to demonstrating the use of low-cost AQ sensors as a tool for the “Citizen’s Observatory”.
- As one of 9 case studies, ~40 static sensor nodes will be deployed throughout Oslo (NO, NO₂, SO₂, O₃, CO, Met) in late 2014.
- Operational mapping for CITI-SENSE users will be carried out using a combination of basic spatial interpolation routines and Geostatistics.
- Experimental component of the project involves mapping using Data Assimilation of the observations into an urban scale AQ model using the Ensemble Kalman Filter.